

# CFA 2025 Conference & Trade Show

Owner/Operator Member Update

MTO Marine Services Overview

November 2025

# Ontario Marine Transportation Study

- October 2023, the province released 'The Future of the Great Lakes Economy: Ontario's Marine Transportation Strategy'.
- A first of its kind in Ontario, the four-pillar strategy sets Ontario's 10-year vision for marine transportation and serves as the foundation for building a strong and sustainable marine sector. The strategy outlines 14 short and long-term actions to support the performance and sustainability of Ontario's marine sector.

## 1 Strengthening marine's position in the multi-modal network



Ensuring that the marine sector is a strong and accessible mode of transportation for people and goods resulting in an overall greener multi-modal network.

## 2 Supporting infrastructure and economic development



Building the infrastructure needed to strengthen the performance and prosperity of Ontario's marine sector, including marine tourism.

## 3 Investing in education, labour and training



Promoting awareness of marine as a viable career path while ensuring Ontario's marine sector is supported by a strong, skilled and diverse labour pool.

## 4 Greening marine transportation



Building an environmentally sustainable marine sector and an overall greener provincial transportation network by supporting low-carbon initiatives, including alternative fuels research.

# Overview of the Provincial Ferry Program

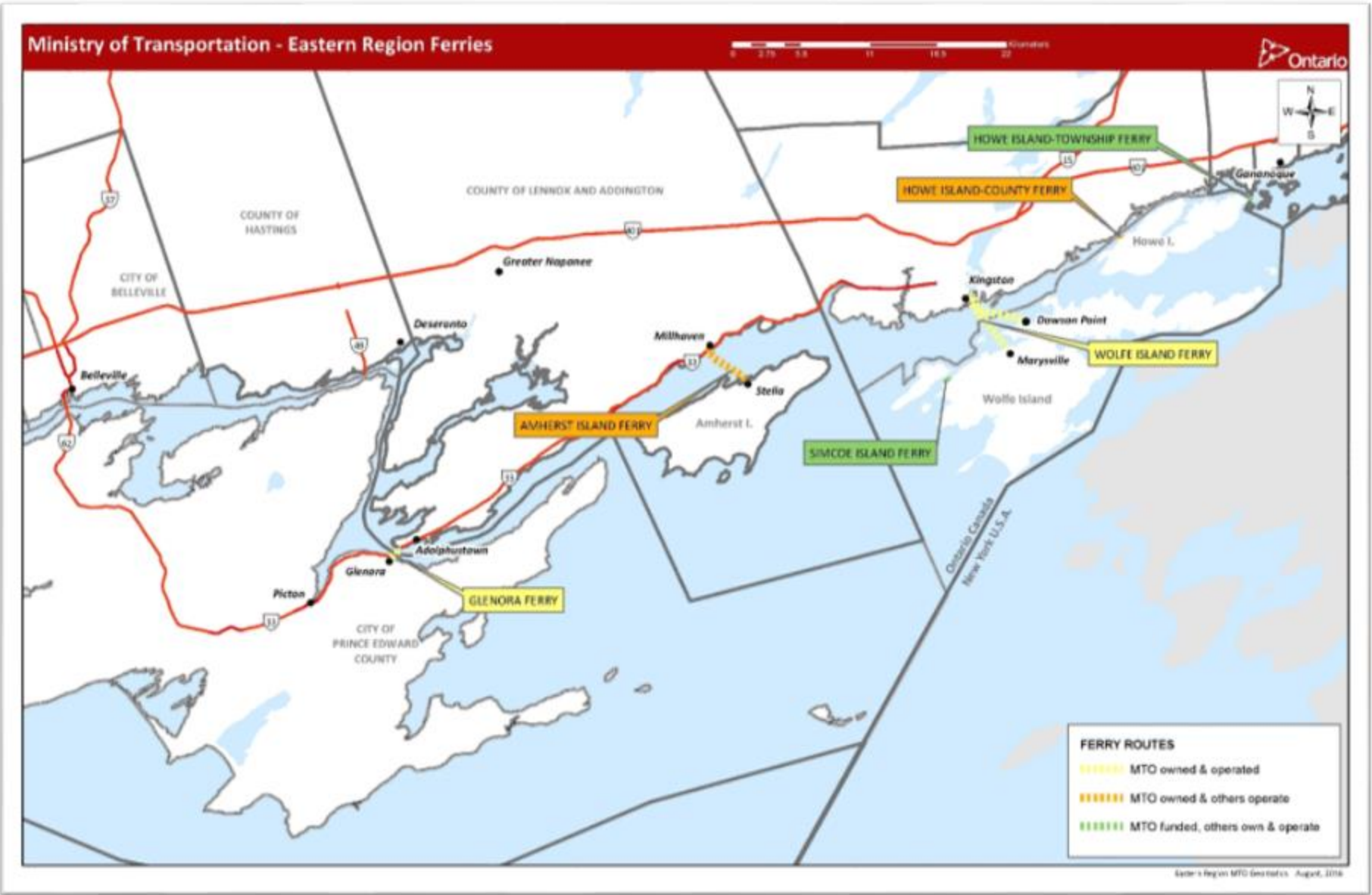
Ferries are an integral part of Ontario's transportation network.

The Ministry of Transportation (MTO) operates or supports:

- 11 passenger ferry operations across the province;
- With 16 vessels;
- Serving 12 provincial routes and one international route to the USA.



# MTO Marine Services East



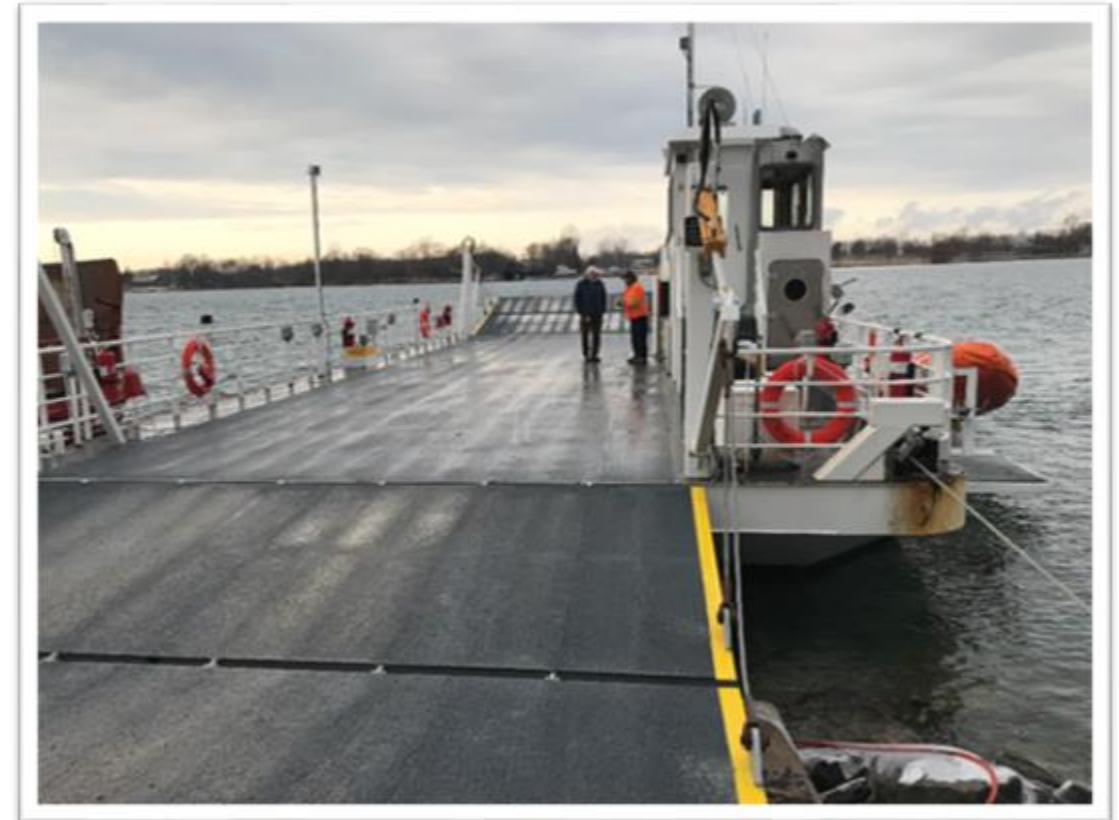
# Glenora Service (East Region)

<b>Owner</b>	Vessel/infrastructure owned by MTO			
<b>Operator</b>	MTO			
<b>Funding</b>	MTO is responsible for all funding.			
<b>Description</b>	Operates year-round between Glenora and Adolphustown. Two-ferry system in the summer.			
<b>Key Facts</b>	<b>Capacity</b>	<b>Distance</b>	<b>Road Access</b>	<b>User Fees</b>
	117 passengers 21 vehicles	1 km	Yes	No
<b>Ridership</b>	Annual passenger: ~600,000 Annual vehicle: ~400,000			



# Simcoe Island Service (East Region)

<b>Owner</b>	Vessel owned by MTO. Infrastructure is owned by the township.			
<b>Operator</b>	Township of Frontenac Islands			
<b>Funding</b>	MTO subsidizes operations at 80%.			
<b>Description</b>	Provides ferry services between Wolfe Island and Simcoe Island. Operates March-January on a seasonal basis on demand.			
<b>Key Facts</b>	<b>Capacity</b>	<b>Distance</b>	<b>Road Access</b>	<b>User Fees</b>
	12 Passengers  6 cars	450 m	No	Yes
<b>Ridership</b>	Annual passenger: ~18,000 Annual vehicle: ~11,000			



# Howe Island Service (East Region)

<b>Owner</b>	Vessel/infrastructure owned by MTO			
<b>Operator</b>	Frontenac County			
<b>Funding</b>	MTO provides a maximum of 80% of operating subsidy as per legal agreement with Frontenac County			
<b>Description</b>	Runs between the mainland and Howe Island. It operates 24 hours, year-round, on demand.			
<b>Key Facts</b>	<b>Capacity</b>	<b>Distance</b>	<b>Road Access</b>	<b>User Fees</b>
	49 passengers 10 vehicles	450 m	No	Yes
<b>Ridership</b>	Annual passenger: ~300,000 Annual vehicles: ~125,000			



# Howe Island Service Township Service (East Region)

<b>Owner</b>	Vessel/infrastructure owned by Township of Frontenac Islands			
<b>Operator</b>	Township of Frontenac Islands			
<b>Funding</b>	MTO provides 80% operating and capital subsidy per legal agreement with Frontenac Islands Township.			
<b>Description</b>	Runs between Howe Island and the mainland just west of Gananoque. The service operates year-round, on demand, between 0630h and midnight.			
<b>Key Facts</b>	<b>Capacity</b>	<b>Distance</b>	<b>Road Access</b>	<b>User Fees</b>
	12 passengers 3 vehicles	400 m	No	Yes
<b>Ridership</b>	Annual passenger: ~72,000 Annual vehicles: ~51,000			



# Amherst Island Service (East Region)



<b>Owner</b>	Vessel/infrastructure owned by MTO			
<b>Operator</b>	Loyalist Township			
<b>Funding</b>	MTO provides 90% operating subsidy as per legal agreement with Loyalist Township			
<b>Description</b>	Runs between Millhaven and Amherst Island. The ferry operates year-round, between 0600h - 0130h, and is available any time for emergency response.			
<b>Key Facts</b>	<b>Capacity</b>	<b>Distance</b>	<b>Road Access</b>	<b>User Fees</b>
	<i>Frontenac II</i> 276 passengers 35 vehicles	4 km	No	Yes
	<i>Amherst Islander II</i> 300 passengers 40 vehicles			
	Annual passenger: ~325,000    Annual vehicle: ~168,000			

# Wolfe Island Service (East Region)



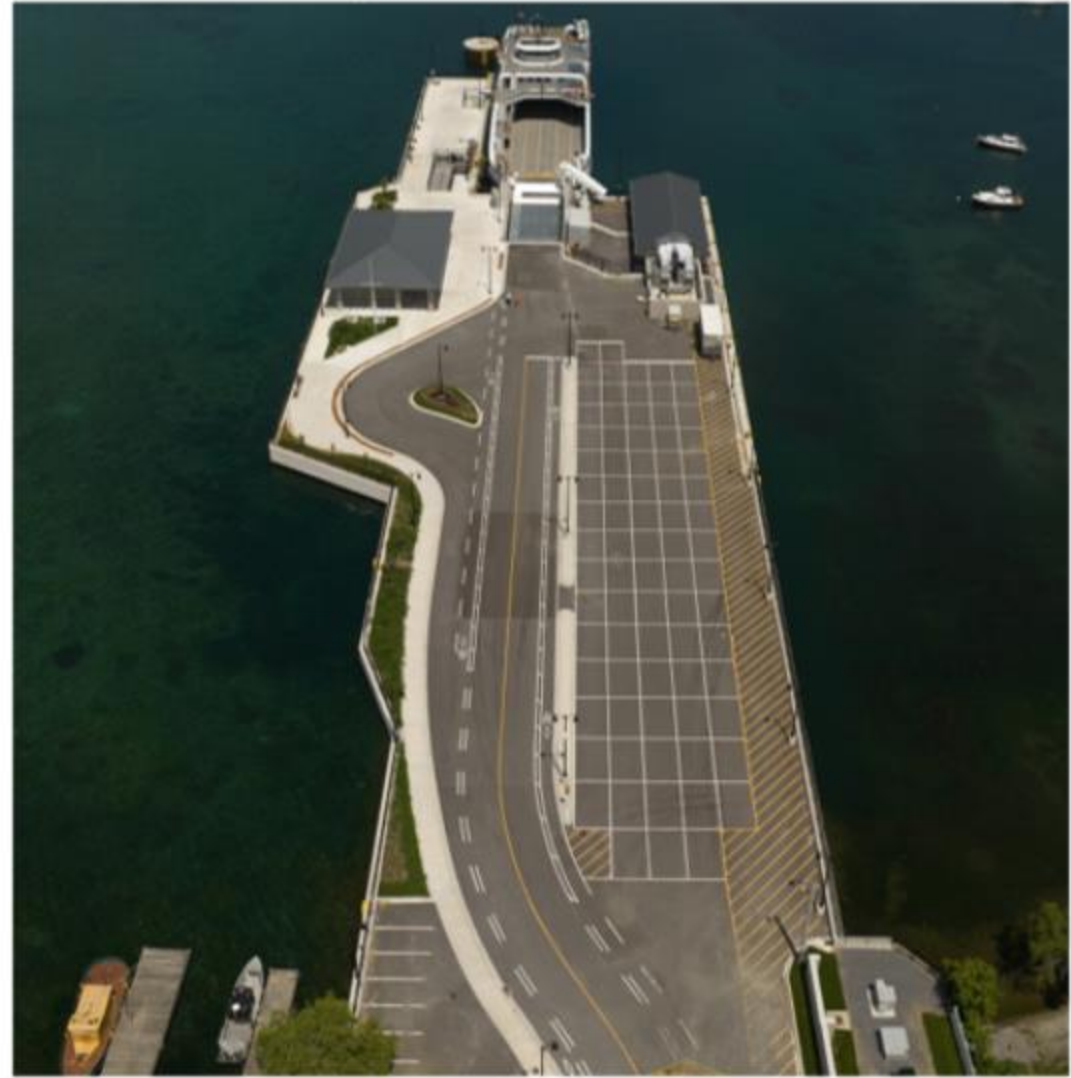
# Wolfe Island Service - New Electric Ferry (East Region)

## Wolfe Islander IV

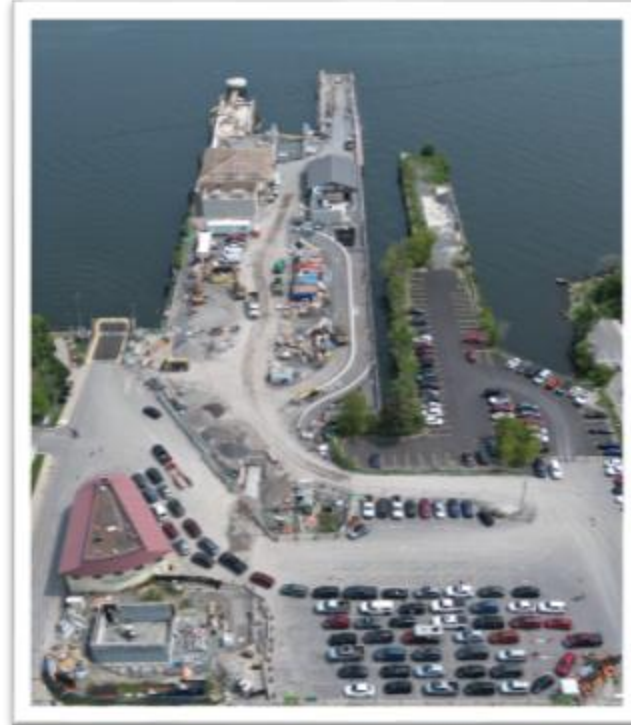
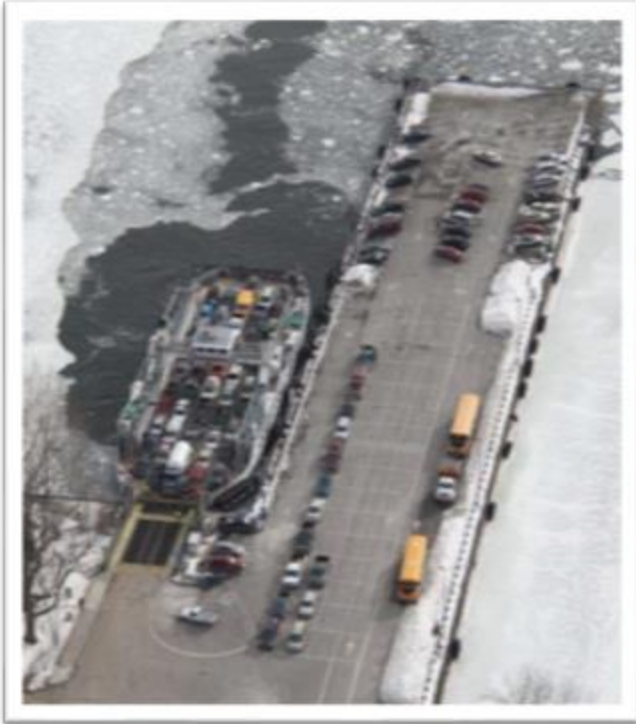
- 98 metres in length, ~80 car capacity
- 4.6MWh battery system onboard
- 12 knots operating speed (fully electric)
- ~950,000 passengers annually
- ~400,000 vehicles annually
- 4.8km trip



# Wolfe Island Service - New Docks (East Region)



# Wolfe Island Service - New Docks (East Region)



# Manitoulin Island Service (North Region)

<b>Owner</b>	Vessel is owned by OSTC. Infrastructure is owned by OSTC, Transport.			
<b>Operator</b>	Owen Sound Transportation Company (OSTC)			
<b>Description</b>	Operates between Tobermory and South Baymouth on Manitoulin Island on a scheduled basis between May to October.			
<b>Key Facts</b>	<b>Capacity</b>	<b>Distance</b>	<b>Road Access</b>	<b>User Fees</b>
	638 passengers 140 vehicles	44 km	Yes	Yes
<b>Ridership</b>	Annual passenger: ~196,000 Annual vehicle: ~86,000			






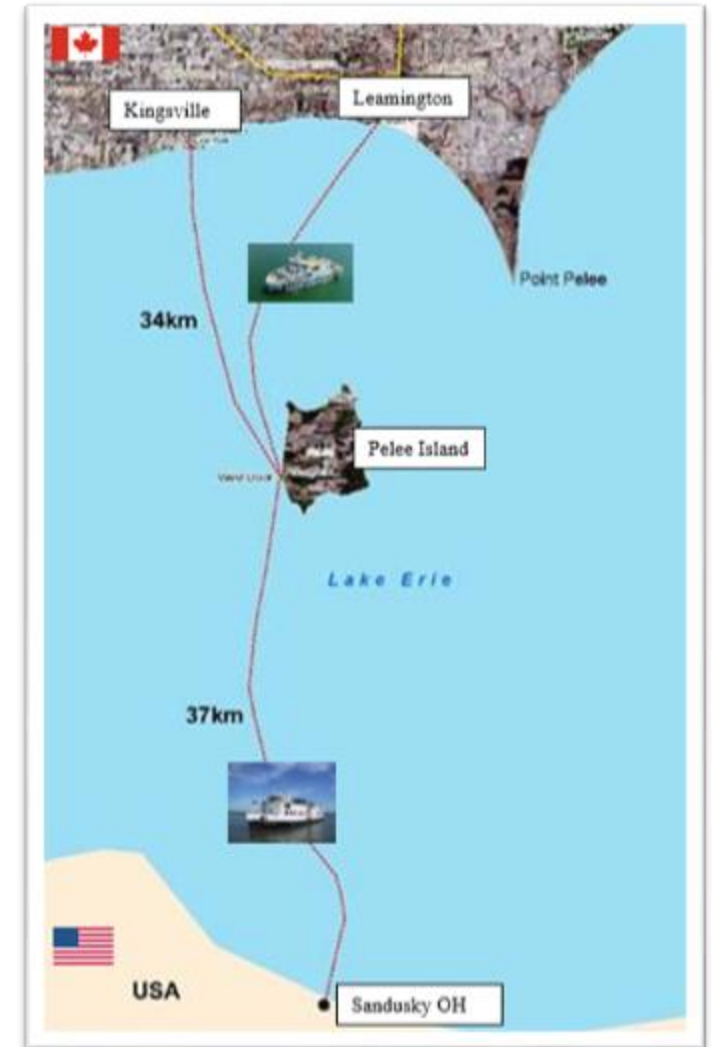
# Moose Factory Island Service (North Region)

<b>Owner</b>	Vessel is owned by the OSTC. Some infrastructure is owned by Complex RE and some is owned by OSTC.			
<b>Operator</b>	Complex RE Limited Partnership is owned by the Moose Cree Group of Companies Limited Partnership.			
<b>Description</b>	Runs between Moosonee and Moose Factory Island, including providing the only scheduled means of transporting vehicles, heavy equipment, and dangerous goods. Seasonal service typically runs from the beginning of June to September.			
<b>Key Facts</b>	<b>Capacity</b>	<b>Distance</b>	<b>Road Access</b>	<b>User Fees</b>
	47 passengers 10 vehicles	3 km	No	Yes
<b>Ridership</b>	Annual passenger: ~5,600    Annual vehicle: ~3,200			



# Pelee Island Transportation Service (West Region)

M.V. Pelee Islander	M.V. Jiimaan	M.V. Pelee Islander II
<ul style="list-style-type: none"> <li>▪ Built in 1960</li> <li>▪ 42m in length</li> <li>▪ Capacity – 196 passengers, 10 cars</li> <li>▪ Requires a crew of 8</li> </ul>	<ul style="list-style-type: none"> <li>▪ Built in 1992</li> <li>▪ 64m in length</li> <li>▪ Capacity – 384 passenger, 34 cars</li> <li>▪ Requires a crew of 15</li> </ul>	<ul style="list-style-type: none"> <li>▪ Build completed in 2018, in Valdivia, Chile</li> <li>▪ 67m in length</li> <li>▪ Capacity – 389 passengers, 34 vehicles</li> <li>▪ Requires a crew of 10</li> </ul>
		



# Pelee Island Transportation Service (West Region)

<b>Owner:</b>	Vessel/infrastructure owned by MTO		<b>Operator:</b>	Owen Sound Transportation Company, Ltd.	
<b>Funding</b>	MTO pays for all direct operating and capital costs of the ferry service and air service, minus the operating revenue per legal agreement with OSTC.				
<b>Key Facts:</b>	<b>Capacity</b>	<b>Service Schedule</b>	<b>Distance</b>	<b>Road Access</b>	<b>User Fees</b>
<b>Pelee Islander</b>	96 passengers 10 vehicles	April - December	24 km (Leamington and Kingsville)	No	Yes
			36 km (Sandusky)	Yes	
<b>Pelee Islander II</b>	400 passengers 34 vehicles	May - December	24 km	No	Yes
<b>Ridership</b>	Annual passenger: ~120,000		Annual vehicle: ~50,000		

# Red Lake Service (North Region)



<b>Owner</b>	Vessel/infrastructure owned by municipality			
<b>Operator</b>	Municipality of Red Lake			
<b>Funding</b>	MTO funds up to a maximum of 90% of operating costs.			
<b>Key Facts</b>	<b>Capacity</b>	<b>Distance</b>	<b>Road Access</b>	<b>User Fees</b>
	26 passengers 0 vehicles	1.3 km	No	Yes
<b>Ridership</b>	Annual Passenger: ~18,000 Annual vehicles: N/A			

# Gardiner Service (North Region)

<b>Owner</b>	Assets owned by MTO			
<b>Operation</b>	Area Maintenance Contractor			
<b>Funding</b>	MTO funds 100% of costs.			
<b>Key Facts</b>	<b>Capacity</b>	<b>Distance</b>	<b>Road Access</b>	<b>User Fees</b>
	10 passengers 4 vehicles 1 vehicle from November 1 of each year to the end of the sailing season.	>50m	Yes	No
<b>Ridership</b>	Annual passenger: ~8,000 Annual vehicle: ~5,000			



# Marine Services Administration & Maintenance Facility



# Marine Services Administration & Maintenance Facility

- 23,000-sq.ft. facility
- Office space
- Maintenance facility including:
  - Propulsion unit maintenance
  - Engine and heavy equipment storage
  - Tool room
  - Locker room, including shower and laundry facilities
- Consolidation of Marine Spares, Equipment & Repair Facilities



# Marine Services Administration & Maintenance Facility



# Ongoing Maintenance & Capital Budgets

Vessel	Year Built	Vessel Age
Wolfe Islander III	1974	51
Wolfe Islander IV	2021	4
Quinte Loyalist	1954	71
Glenora	1952	73
Frontenac-Howe Islander	2004	21
Frontenac II	1962	63
Amherst Islander II	2021	4
Howe Islander (Foot Ferry)	1955	70
Frontenac Islands Simcoe Islander II	2022	3
Pelee Islander	1960	65
Jiimaan (not in service)	1992	33
Pelee Islander II	2018	7
Chi-Cheemaun	1974	51
Niska 1	2010	15
Miss McKenzie II	2007	18
Cassiopeia IV	1957	68



Questions?