



marin@m

18.03.2026

marinom GmbH

Address:

Wilhelm-Herbst-Straße 5
28359 Bremen

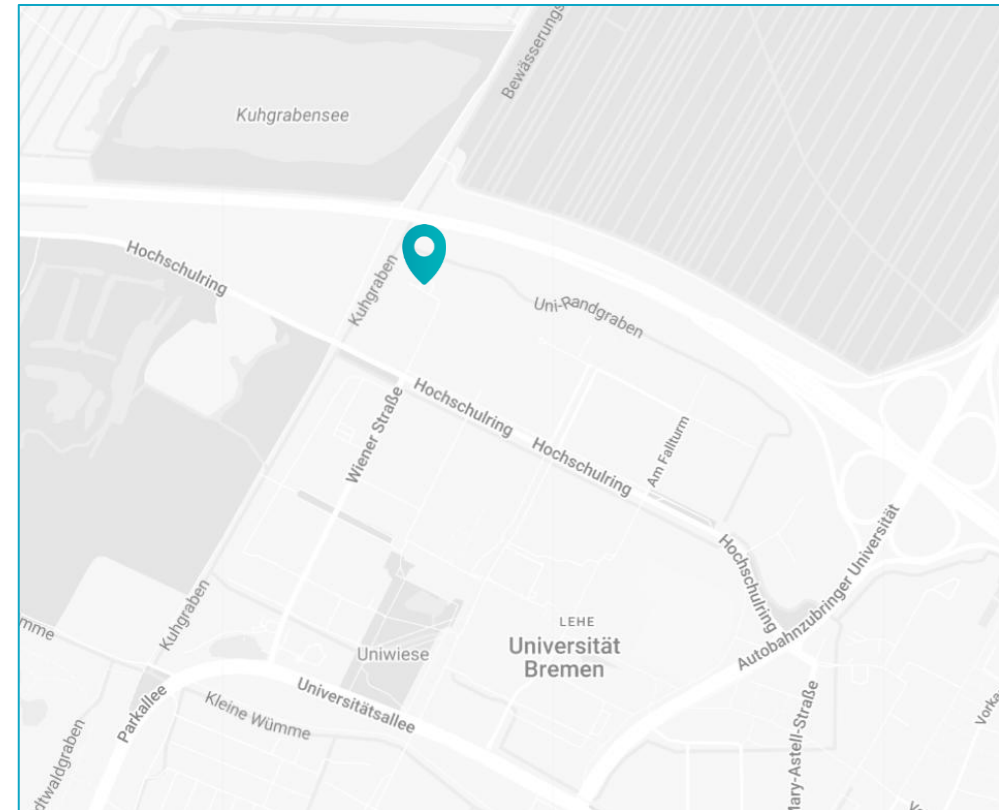
Founded:

2020

Managing director:

Dr. Arne Kraft

Dr. Alexander Jeschke



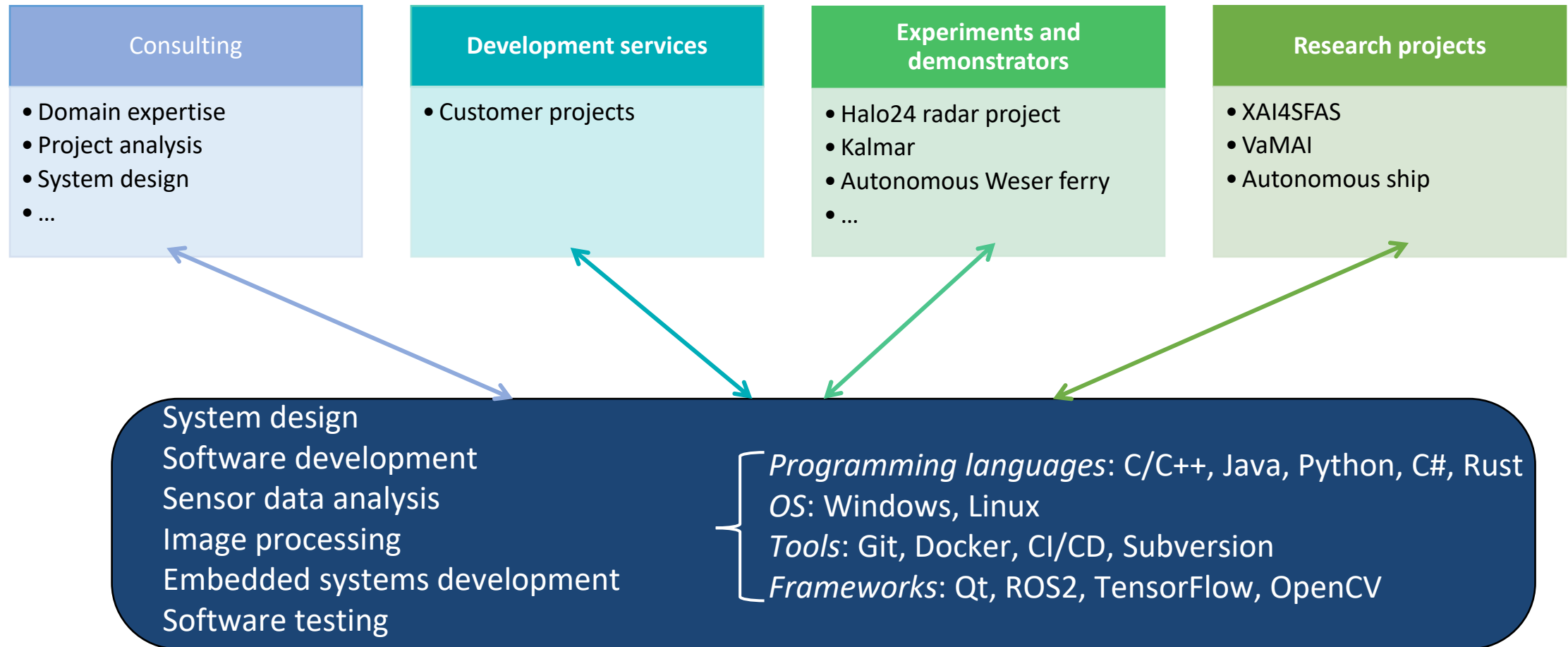
marinom is located directly at the University of Bremen with ideal transport connections.

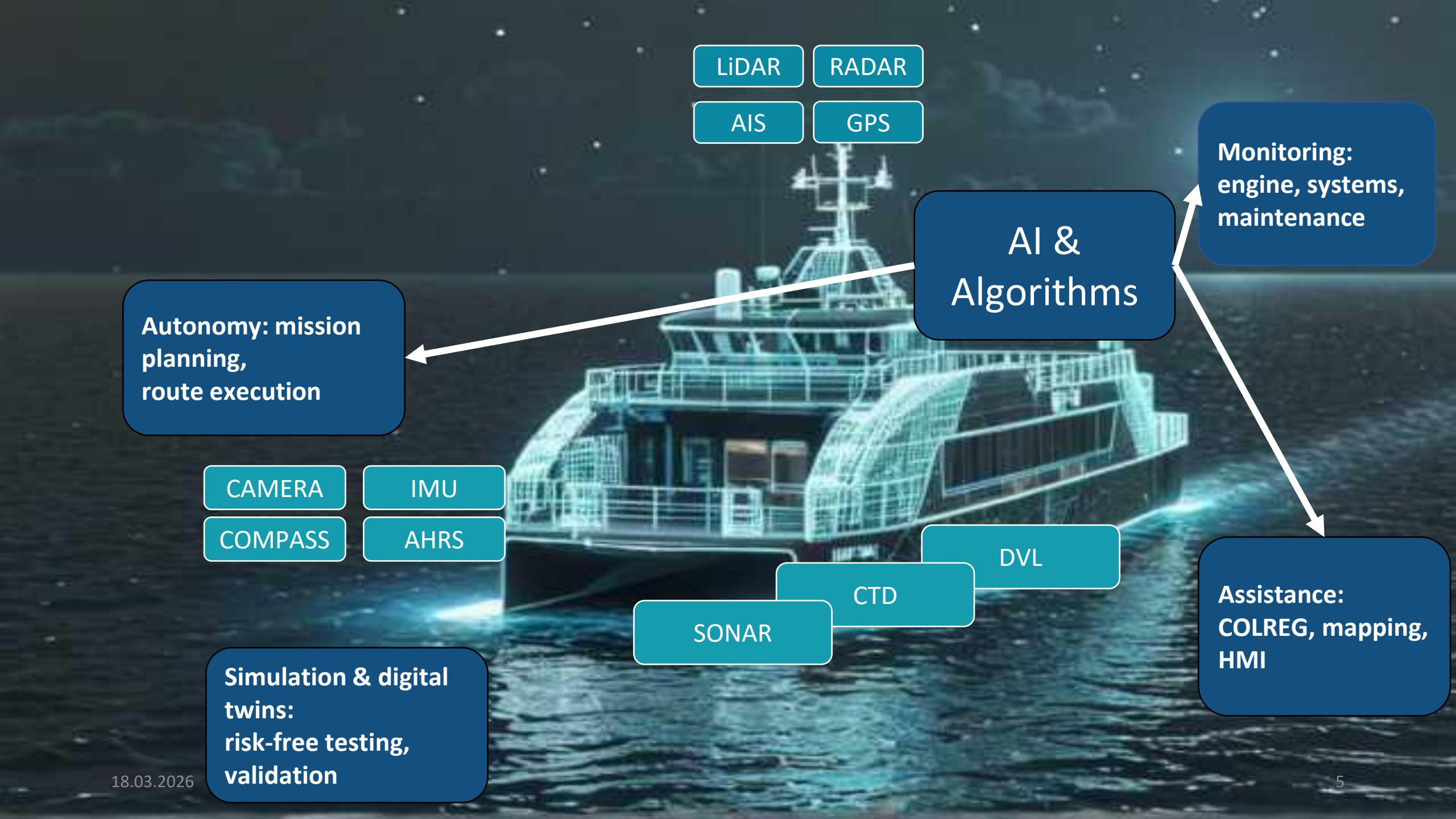
The marinom Team

A dynamic team of over **40 professionals** with expertise in **physics, engineering and software development.**



marinom's Project Branches





LiDAR RADAR

AIS GPS

AI & Algorithms

Monitoring:
engine, systems,
maintenance

Autonomy: mission
planning,
route execution

CAMERA

IMU

COMPASS

AHRS

DVL

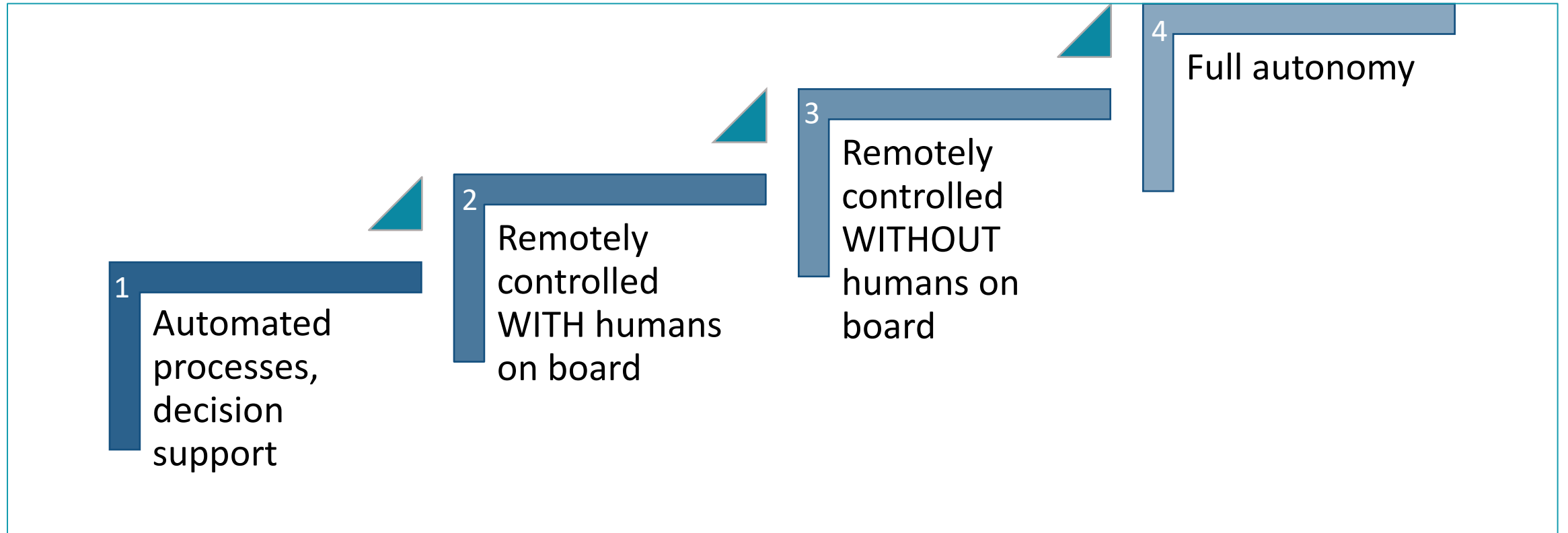
CTD

SONAR

Assistance:
COLREG, mapping,
HMI

Simulation & digital
twins:
risk-free testing,
validation

Levels of Autonomy According to IMO



Projects of marinom

Public projects

Schuppi

Schuppe

client: State of Bremen

Kalmar

PR: BWI



Research projects

MOIN

XAI4SAFS

ProSea

VaMAI

COLREG

Navigation & Monitoring

Navigation

- COLREG
- Collision avoidance
- Autonomous route planning
- Maneuver optimization

Monitoring

- Predictive maintenance
- System condition monitoring
- Anomaly detection
- Performance analysis

Data Processing & Sensor Fusion

Data Processing

- Camera
- AIS
- Radar
- LiDAR
- Sonar
- GPS
- IMU, Compass, DVL, ...

Sensor fusion

- Higher accuracy
- Fault tolerance
- More robust decisions
- Data evaluation

From Sensor to Decision

Sensor data acquisition

- Multi-sensor integration
- Environmental data adaptation
- Real-time data processing

AI object detection

- Sensor-based object detection
- Sensor fusion for robust data
- Specialized neural networks

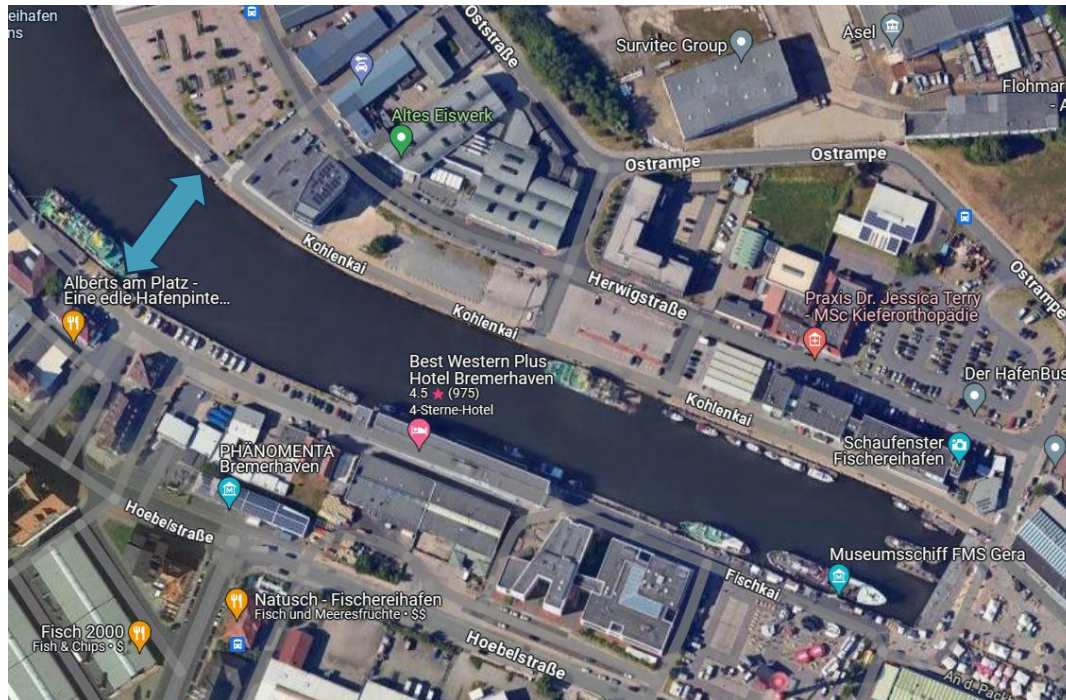
Intelligent decision

- Explainable AI
- COLREG-compliant logic
- Behaviour trees for autonomy

System integration

- Retrofit of existing systems
- Legacy system integration
- Modular implementation

Autonomous Ferry Demonstrator "Schuppi"

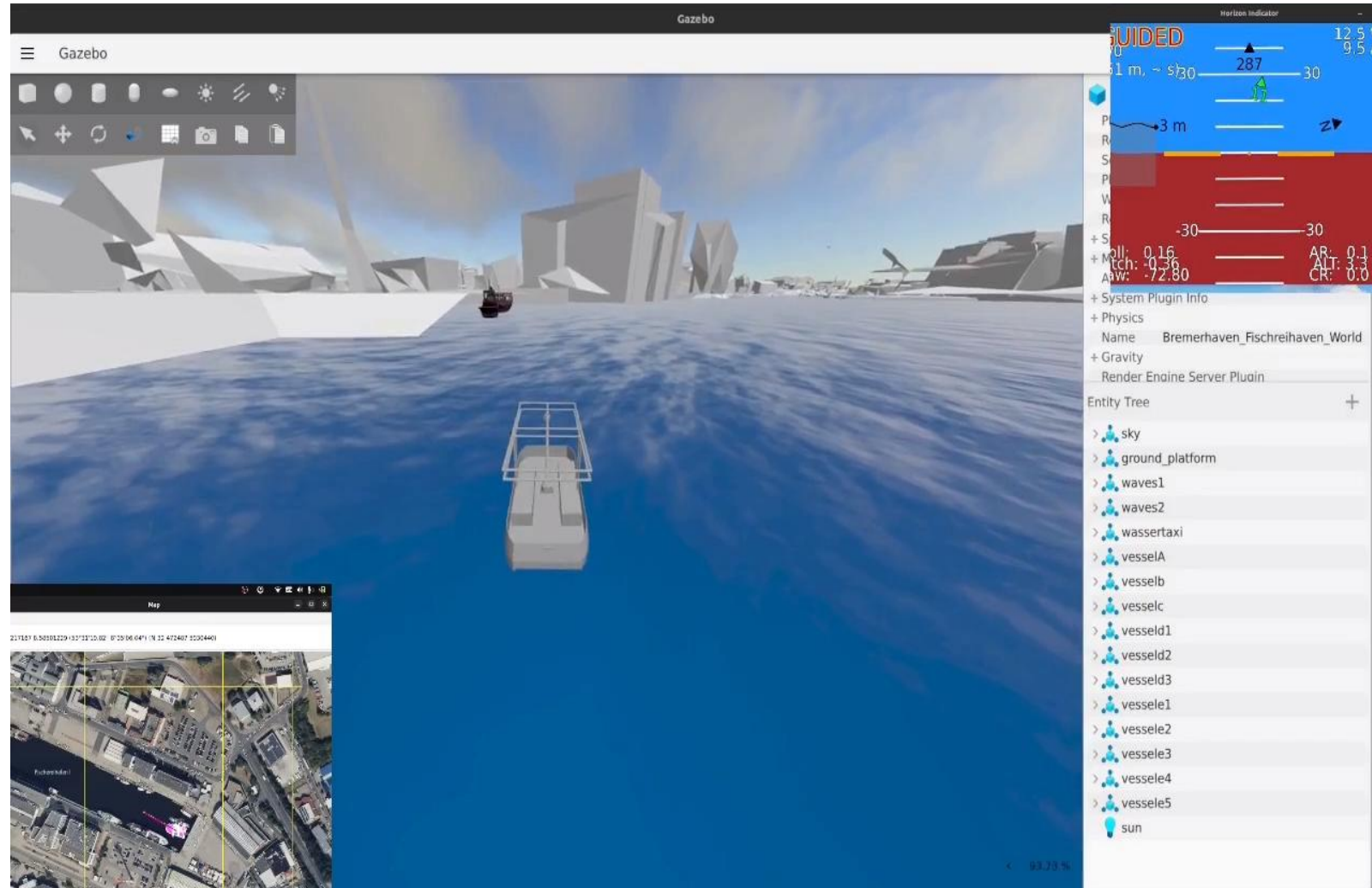


[Back](#)



Schuppi's Digital Twin

- Gazebo/Ignition simulation
- Real-world environmental and sensor data
- Risk-free testing



[Back](#)

FerryGo!

- Roadmap for the autonomous ferry
- Consortium project funded by Interreg
- marinom: sensor selection, data analysis, navigation AI
- Retrofit of two existing ferries in operation

[Back](#)

18.03.2026



Deutschland – Nederland

#MOIN-AISchiff

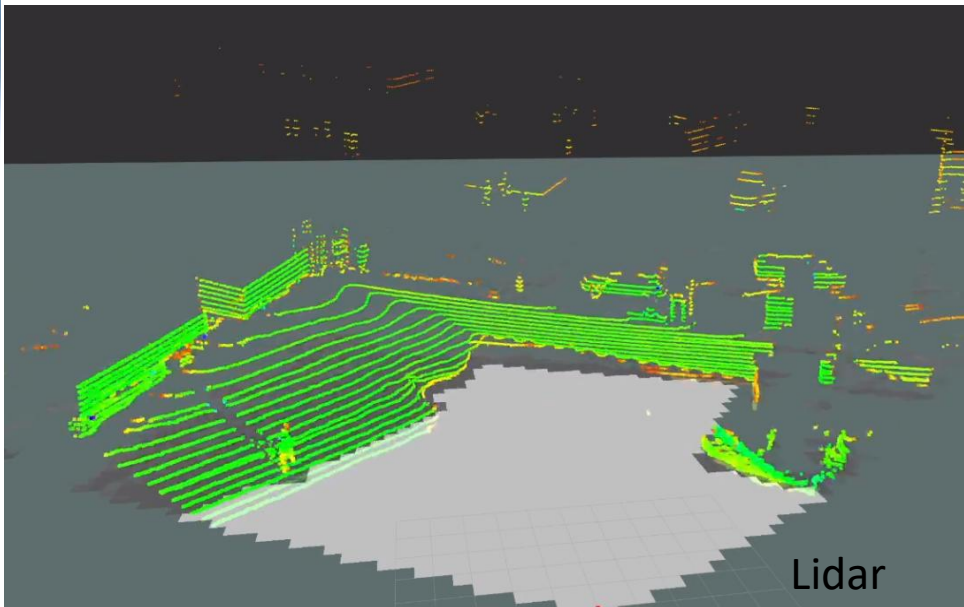
- Retrofit of an existing tug with sensors and control software
- Position estimation during failures
- Route planning based on GPS

[Back](#)

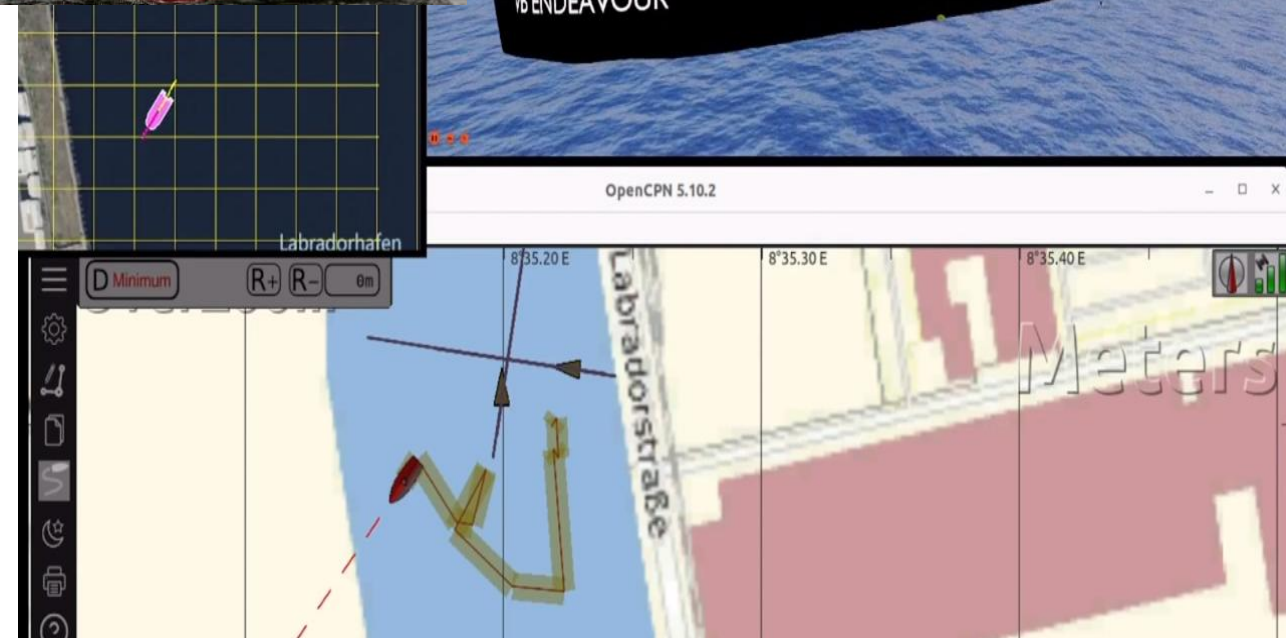
Gefördert durch:



Bundesministerium
für Forschung, Technologie
und Raumfahrt



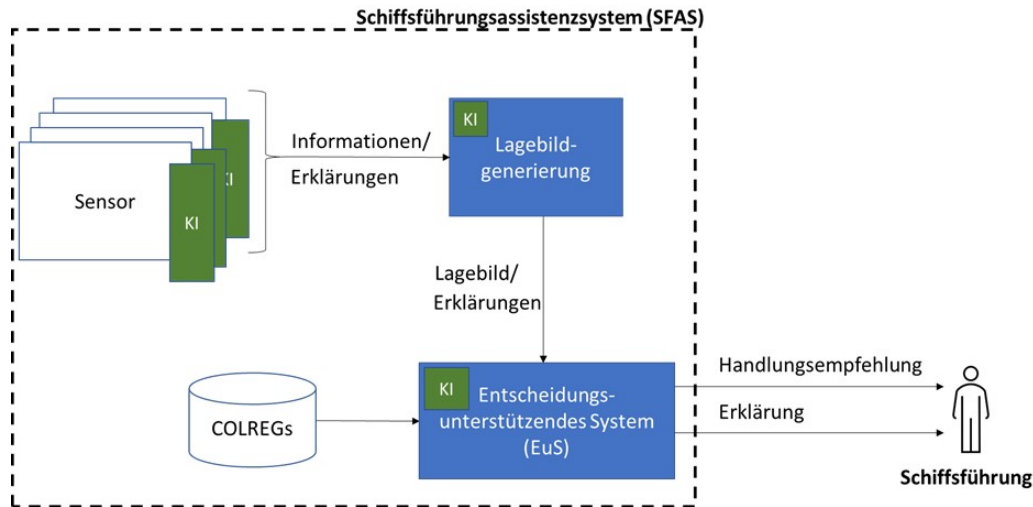
Lidar



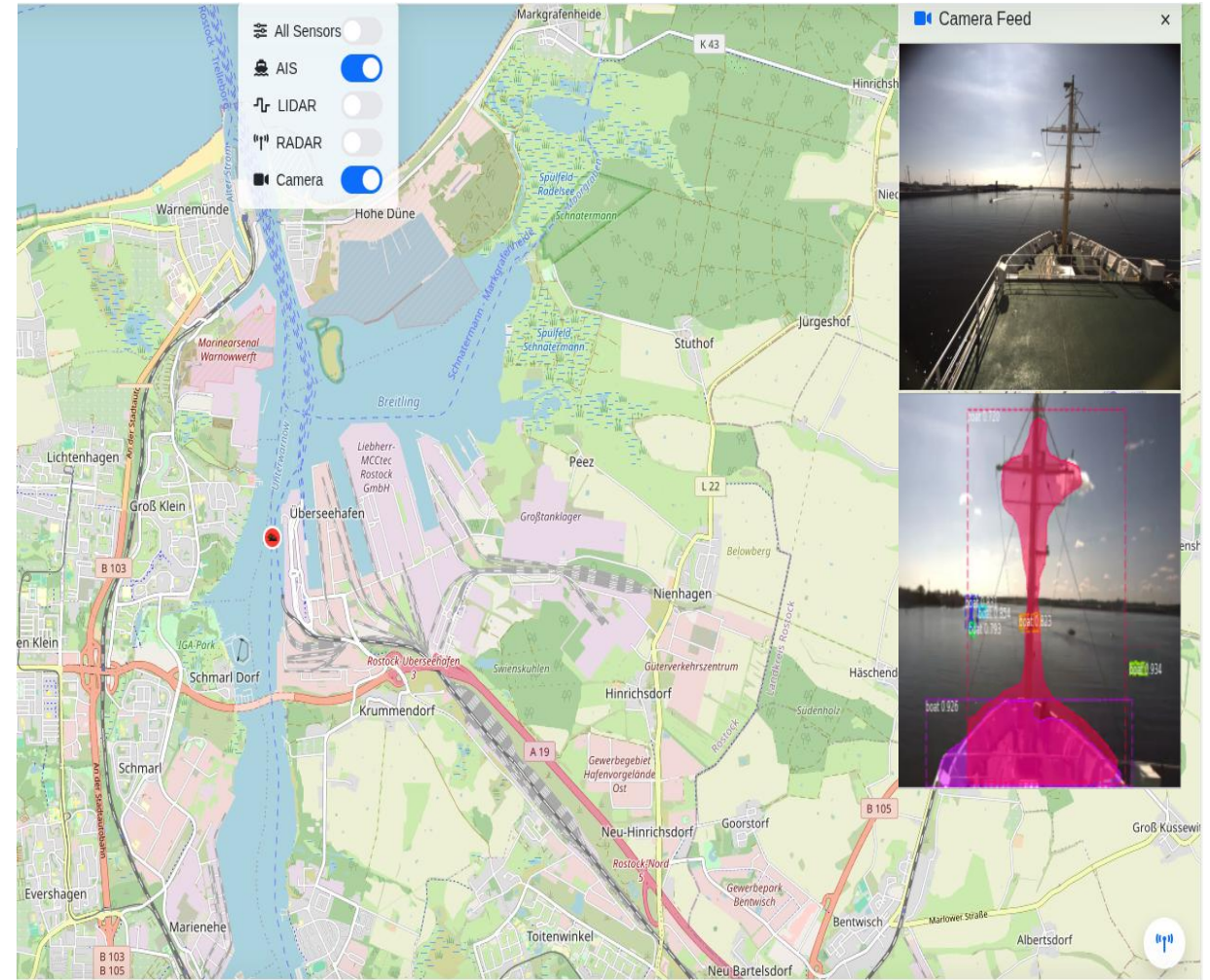
XAI4SFAS

- AI model for generating explainable action recommendations
- Based on COLREGs and situational description

Gefördert durch:



[Back](#)



Contact

marinom GmbH

Wilhelm-Herbst-Straße 5
28359 Bremen

Tel.: 0421 98 96 90 0

Email: info@marinom.de

www.marinom.de

